



# Archibus SaaS Modules, Differentiators, and Value Proposition

Danielle Moore

Mário Correia

19 August 2021

A close-up photograph of a person's hands holding a dark-colored smartphone. The person is wearing a blue button-down shirt. The word "Content" is written in a large, white, sans-serif font across the middle of the image, partially overlapping the phone and the person's hand.

# Content

Terminology

**Archibus SaaS Modules**

**Value Proposition**

**Differentiators**

Extra Slides on SaaS Modules  
features and benefits

**Q&A**

# Terminology

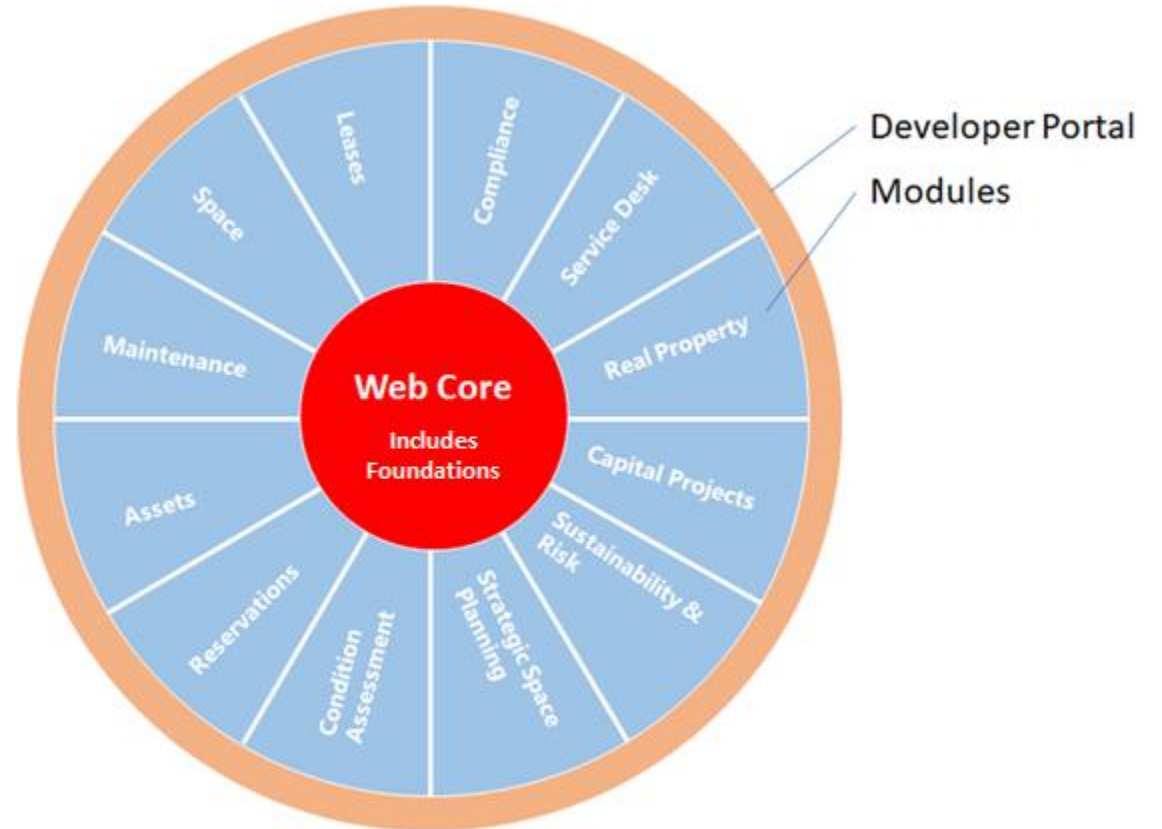
OLD	NEW
Archibus Cloud Archibus SaaS Archibus Enterprise SaaS Archibus Enterprise Cloud Archibus Private Cloud Archibus Private SaaS	<b>Archibus</b> SaaS delivery
Archibus Archibus Enterprise Archibus On-Prem	<b>Archibus</b> On-premise or partner-hosted delivery
Personalization Layer Customization Layer	Developer Portal



# Archibus SaaS Modules

# Archibus: SaaS delivery

- **Set of modules, SaaS pricing**
- **Automatic quarterly releases** to latest version
- Foundations
- Developer Portal to personalize



# SaaS Pricing - Modules

## Archibus SaaS Fees

Status: Released

Valid From: April 1st 2021 - December 31 2021

Partner Tier	Referral
New or Upsell:	New
SqFt:	249,999

SaaS Fees			
Module	Committed Area (SF)	Annual Fee (SRP)	Annual Fee (Referral)
Foundations	up to 249,999	\$8,640	\$7,344
Space	up to 249,999	\$8,064	\$6,854
Maintenance	up to 249,999	\$10,080	\$8,568
Assets	up to 249,999	\$7,056	\$5,998
Reservations	up to 249,999	\$9,072	\$7,711
Real Property	up to 249,999	\$7,056	\$5,998
Capital Projects	up to 249,999	\$5,040	\$4,284
Strategic Space Planning	up to 249,999	\$3,024	\$2,570
Service Desk	up to 249,999	\$3,024	\$2,570
Condition Assessment	up to 249,999	\$3,024	\$2,570
Compliance	up to 249,999	\$5,040	\$4,284
Sustainability & Risk (Any App)	up to 249,999	\$3,024	\$2,570
Sustainability & Risk (Any 3 Apps)	up to 249,999	\$5,040	\$4,284
Sustainability & Risk (Full Suite)	up to 249,999	\$7,056	\$5,998
Archibus Healthcare	0	\$0	\$0
Module		Annual Fee (SRP)	Annual Fee (Referral)
Leases	10	\$0	\$0
<b>Subtotal Annual SaaS Fee</b>		<b>\$84,240</b>	<b>\$71,604</b>
<b>2+ Module Discount</b>	<b>21.0%</b>	<b>(\$17,690.40)</b>	<b>(\$15,036.84)</b>
<b>Additional Discount</b>	<b>0.0%</b>	<b>\$0.00</b>	<b>\$0.00</b>
<b>Subtotal Annual Discount</b>		<b>(\$17,690.40)</b>	<b>(\$15,036.84)</b>
		SRP	Referral
<b>TOTAL ANNUAL SAAS FEE</b>		<b>\$66,550</b>	<b>\$56,567</b>

Include?

y

y

y

y

y

y

y

y

y

y

y

y

y

y

n

n

\* Overages for additional area will be charged at \$ 0.0182 / SF / month (Area Overage Fee)  
 \* Overages for additional leases will be charged at \$ 204 / Lease / month (Lease Overage Fee)

## Archibus SaaS Establishment Fees provided by Archibus, Inc.

Status: Released

Valid From: April 1st 2021 - December 31 2021

Only include for Establishment Services provided by Archibus, Inc.

Archibus Cloud Establishment Fees			
System Setup	Fee	Quantity	Fee
Foundations	\$3,600	0	\$0
Space	\$3,600	0	\$0
Maintenance	\$7,200	0	\$0
Assets	\$3,600	0	\$0
Reservations	\$5,000	0	\$0
Real Property	\$5,000	0	\$0
Leases	\$5,000	0	\$0
Capital Projects	\$3,600	0	\$0
Strategic Space Planning	\$5,000	0	\$0
Compliance	\$5,000	0	\$0
Service Desk	\$5,000	0	\$0
Condition Assessment	\$3,600	0	\$0
Emergency Preparedness	\$3,600	0	\$0
Environmental Sustainability	\$3,600	0	\$0
Environmental Health & Safety	\$3,600	0	\$0
Hazardous Abetment	\$3,600	0	\$0
Hazardous Materials	\$3,600	0	\$0
Waste Management	\$3,600	0	\$0
Energy Management	\$3,600	0	\$0
Green Building	\$3,600	0	\$0
Archibus Healthcare	\$7,200	0	\$0
Integrations/Connectors	Cost	Quantity	Fee
Automated Flat-File Feed via SFTP	\$5,000	0	\$0
Single Sign-On (SAML2)	\$2,500	0	\$0
Microsoft Exchange Connector	\$10,000	0	\$0
APIs Configuration	\$3,600	0	\$0
Localization Kit for non supported languages	\$2,000	0	\$0
Training	Hourly Rate	Quantity	Fee
Training	\$250	0	\$0
Drawing Migration	Cost per SF	Quantity	Fee
Load Fully Compatible AutoCAD Drawings	\$0.005	0	\$0
Load Partially Compatible AutoCAD Drawings	\$0.025	0	\$0
Load Incompatible AutoCAD Drawings	\$0.035	0	\$0
Project Management			12.50%
			\$0
TOTAL SERVICE ESTABLISHMENT FEES			\$0
Reimbursable Expenses		Price Basis	Estimate
Travel - Onsite Training		Travel & Accommodation	\$0

# SaaS Offering

SaaS Modules	Included	Not included
<b>Foundations</b>	Core, Workplace, Performance Metrics, Mobile Framework, Smart Client and Smart Client Extensions	
<b>Space</b>	Space Inventory, Occupancy, Chargeback, Moves	Workspace Transactions
<b>Maintenance</b>	Corrective (On-demand) and Preventive Maintenance	
<b>Assets</b>	Asset Management	Enterprise Asset Management
<b>Reservations</b>	Reservations, Hoteling	
<b>Strategic Space Planning</b>	Strategic Space Planning	
<b>Condition Assessment</b>	Condition Assessment	
<b>Compliance</b>	Compliance Management	
<b>Service Desk</b>	Service Desk	
<b>Real Property</b>	Portfolio, Leases, Costs, Chargeback & Invoicing, SFA	Forecasting, Advanced Forecasting, US Federal Property Registry
<b>Leases</b>	Leases, Costs	
<b>Capital Projects</b>	Capital Budgeting, Projects, Commissioning	
<b>Sustainability &amp; Risk Modules</b>	Can be purchased in many sub-configurations: Emergency Preparedness, Environmental Sustainability, Environmental Health & Safety, Hazardous Abatement, Hazardous Materials, Waste Management, Energy Management, Green Building	
<b>Archibus Healthcare</b>	New bundle including Space, Maintenance, and healthcare-specific features	



# Current Set Up in Product

The screenshot displays the Archibus web interface. The main navigation menu on the left includes: Home, Search, Favorites, **Archibus Essentials** (highlighted), Real Property, Capital Projects, Space, Sustainability & Risk, and Workplace Services. The 'ARCHIBUS ESSENTIALS' section is expanded, showing a list of modules: Foundations, Space, Maintenance, Assets, Reservations, and Leases. A 'Shortcuts' section on the right lists: Space Console, Locate Employee, Service Console, My Dashboard, Workplace, and Reports Central. A 'Browse all' section at the bottom lists: Space and Moves, Facility Services, Reservations and Workspaces, Assets, Background Data & Reports, System Administration, and Self-Service User. A callout box on the right explains the current setup.

When a subset of modules are enabled, Navigator shows them all on the first level (Navigator starts with the application level)



# Archibus Functionalities in Foundations

---



## Workplace (self-service)

- Request building services such as copying or key access
- Search for rooms and locate them on floor plans
- Search for employees and locate their assigned offices on a floor plan
- Search for a department and examine on a floor plan all the space assigned to this department



## Maintenance

- Service Console - Centralize all occupant service requests into a single strategic console
- Build a central inventory of properties, buildings, equipment, and furniture



## Space

- Manage your space inventory and allocations
- Space Console – Space and Employee location and allocation (do not include Teams)

# Archibus Functionalities

Modules vs. Foundations in blue



## Workplace (self-service)

- Request building services such as copying or key access
- Search for rooms and locate them on floor plans
- Search for employees and locate their assigned offices on a floor plan
- Search for a department and examine a floor plan to determine the space assigned to this department
- Book Meeting – With Reservation Module and Workspace
- Request Moves – With Space Module



## Maintenance

- Service Console - Centralize all occupant service requests into a single strategic console.
- Full Archibus Maintenance Application including:
  - Maintenance Console
  - Maintenance SLAs
  - PM Processes and Planner
  - Labor Scheduler
  - Maintenance and Labor cost analysis
- Maintenance Mobile Apps included



## Space

- Manage your space inventory and allocations
- Space Console – Space and Employee location and allocation
- Move Management including Move Console and Move Scenarios
- Space Chargeback
- Manage Team Space
- Space Mobile Apps included

# Archibus Functionalities

Modules vs. Foundations in blue



## Assets

- Build a central inventory of properties, buildings, equipment, and furniture
- Inform capital planning with a complete view into the contents, condition, and lifecycle data of your asset inventory
- All Asset Management consoles – Life Cycle, System, Registration, Disposal, and Asset Portal
- Telecom inventory and console
- Asset Mobile Apps included



## Reservation

- Book Meeting and Workspace in Workplace
- Design a complete meeting reservation and hoteling programs
- Reservation and Hoteling notifications and services
- Outlook and Exchange integrations



## Lease

- Track and manage your lease portfolio, including expiration alerts, occupancy reports, ownership reports and cost analysis
- Lease Console
- Lease Abstract and Cost reports
- Lease Alerts

# Value Proposition



We make workplaces good for business and great for people by providing an easy-to-implement, flexible, and scalable platform to help manage their entire built environment and integrated data, no matter the size or location.

# Why Archibus?



We help **facility managers** keep things running smoothly by streamlining processes across the organization.

We help **maintenance managers** extend the asset lifecycle by optimizing operations through preventive maintenance and corrective work.

We help **compliance managers** manage and adhere to local, state, and federal regulations by tracking in reporting on the information that is most important to them.

We help **real estate managers** manage their portfolio across the globe by centralizing all data in one place.

We help **employees** be more efficient and productive by offering a self-service environment that allows them to book their own seats and submit their own requests from anywhere.

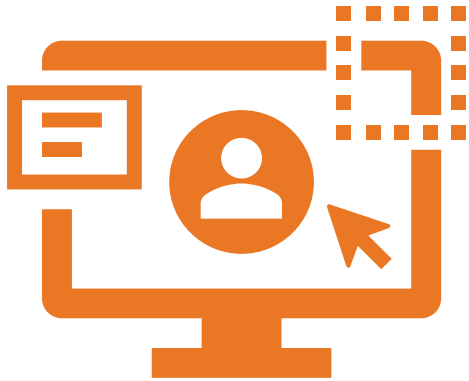
# Why Archibus?



# Differentiators



## Manage Data in One Place for Quick Decision Making



Obtain a holistic view of your built environment by quickly integrating data with any platform, software, sensors, etc. you currently have or add on in the future with our open platform.

## Meets Your Organization's Global & Local Needs



Your environment can be easily adapted based on industry trends, best practices, local cultures, and any other needs specific to your business by our experienced Global Partner Network who understand the market and your business.

## Easily Perform Daily Tasks



Users are more efficient and productive when using the simple user interface (UI) and the full functionality and powerful user experience (UX) of the Archibus platform.

## Quickly Launch Across Organization



Easy implementation of the Archibus platform assists with a straightforward, no surprises deployment and rapid adoption, from data entry to business outcomes.



### Help As You Grow



Whatever, or whenever the need arises, Archibus provides unmatched support and services backed by 35+ years of experience and a deep understanding of the global IWMS market.

### Enhance Your Data



Improve your energy, asset lifecycle, strategic space planning, etc. data with existing BIM data via a seamless bi-directional integration with Autodesk.

### Work in Your Native Language

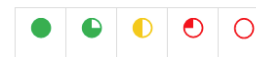


Archibus is available out-of-the-box in seven languages and can be easily configured for others.

# Competitive Comparison

# Competitive Comparison

\*1 Values comes from intel received by partners where we understood that there is a minimum deal size.



≡ Result achieved only with optional extra

	Archibus Market Perception	Planon	FM Systems	Spacewell	ServiceNow/ Nuvolo	Tango	Accruent FAMIS	Trimble Manhattan	IBM TRIRIGA
<b>Go To Market</b>									
Sales Team	Channel	Mainly Direct, Some Channel		Mainly Direct, Some Channel					Mainly Direct, Some Channel
Typical deployment time	3 to 6 months	3 to 6 months	3 to 6 months	A few weeks	1 to 2 months	3 to 6 months	1 to 2 months	3 to 6 months	3 to 6 months
Deployment Model	On-premises and Single-tenant hosted by a third party	Single-tenant hosted by the vendor and On- Premises	On-premises and Single-tenant hosted by the vendor	Multitenant and Single hosted by a third party	Single-tenant hosted by a third party	Multitenant hosted by a third party	Single tenant hosted by the vendor	Single tenant hosted by the vendor	<i>no info on analyst report</i>
<b>Product</b>									
Capital project management									
Real estate portfolio management									
Space and facilities management									
Maintenance management									
Sustainability and energy management									
AI and advanced analytics									
Admin, mobility, integration, internationalization									





# Archibus SaaS Modules

## Features and Benefits

Slides also included in the  
ARCHIBUS SAAS PROPOSAL TEMPLATE PPT  
[Link here](#)

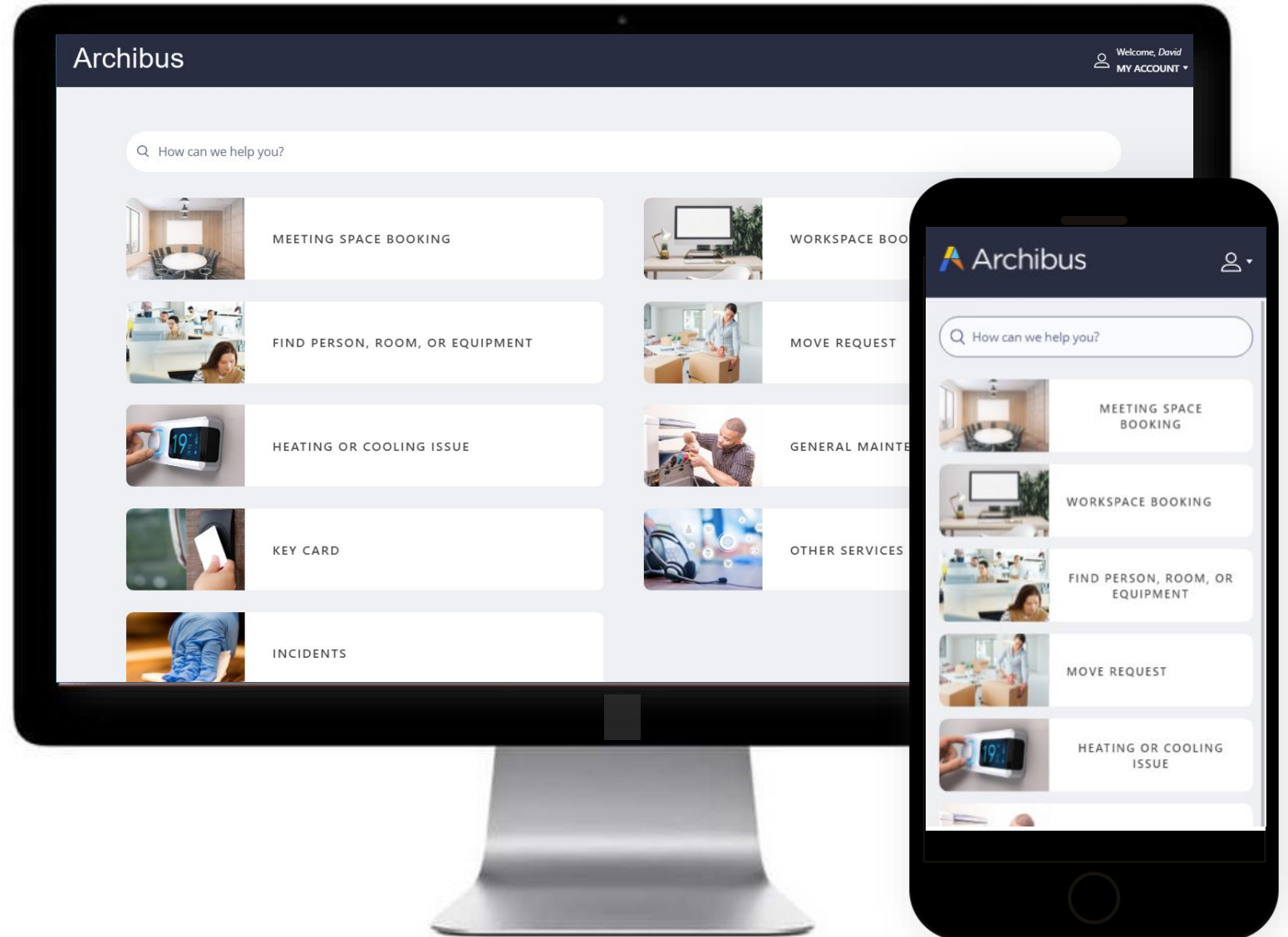


# Foundations

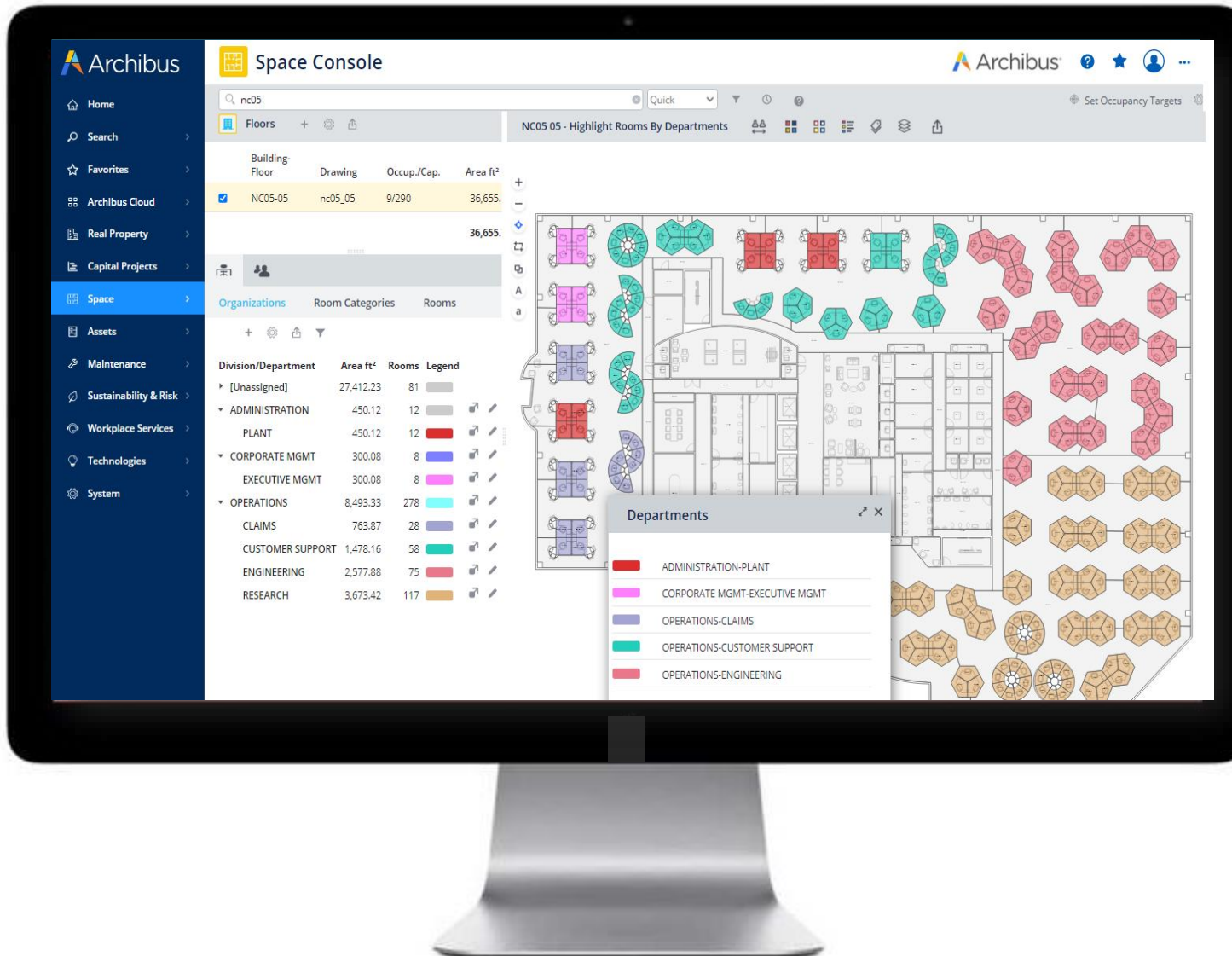
## Get a Quick Start with basic IWMS functions

Self Services Workplace utility that includes:

- Way Finding to locate rooms, people and equipment
- Basic Requests like corrective maintenance, and moves
- Manage basic on-demand services
- Manage your asset inventory and reporting
- Manage your space inventory and allocation



# Space



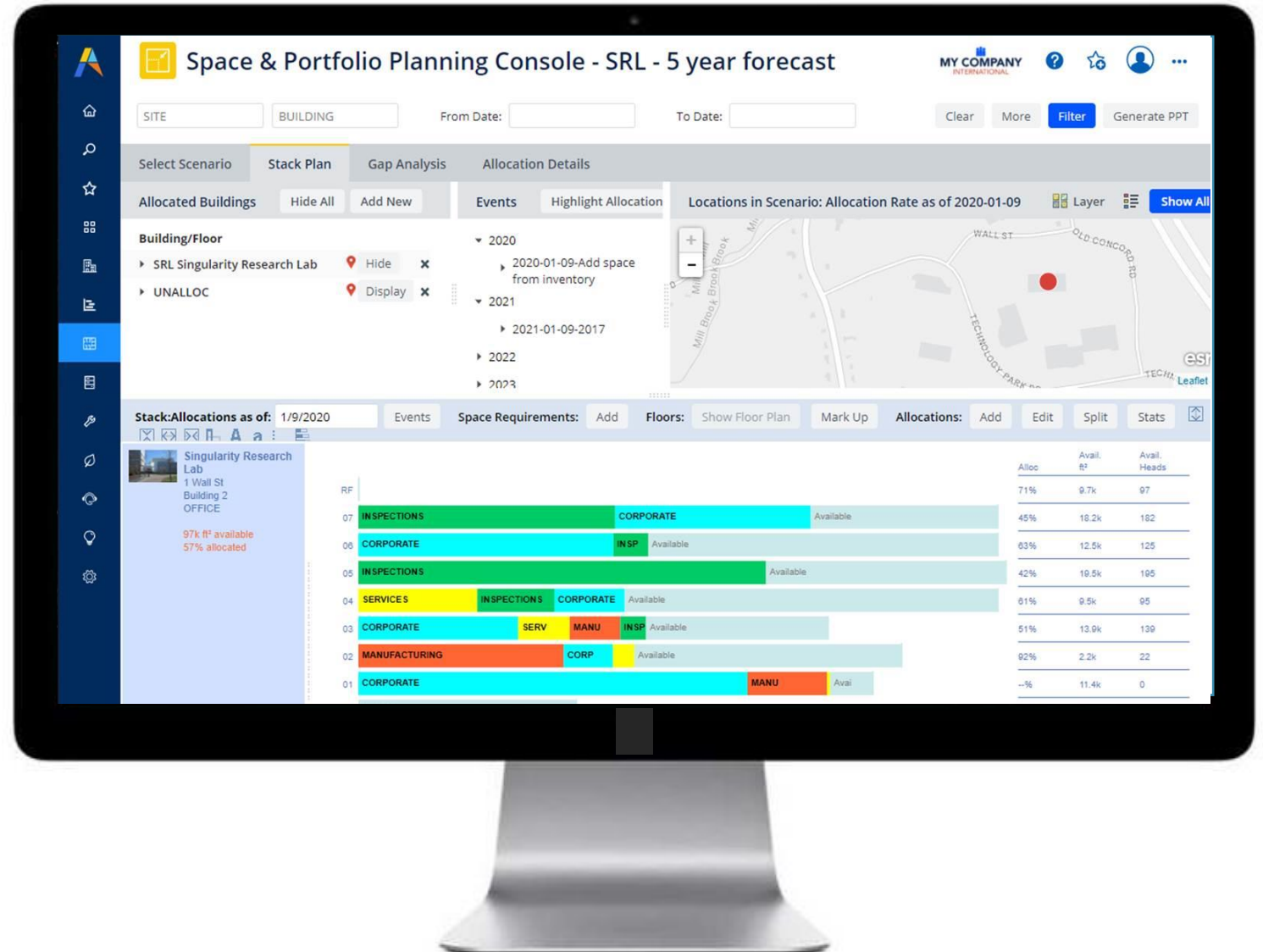
## Manage Space, Occupancy & Vacancies

- Dynamic color-coding of floorplans based in organization, room type and vacancy
- Rapid assignment of people to seats/rooms
- Conduct space & occupancy surveys
- Manage chargeback of space to business units
- Coordinate individual and group moves through the Move Console
- Track history of allocation and occupancy changes

# Strategic Space Planning

## Develop scenarios to inform portfolio strategic activities

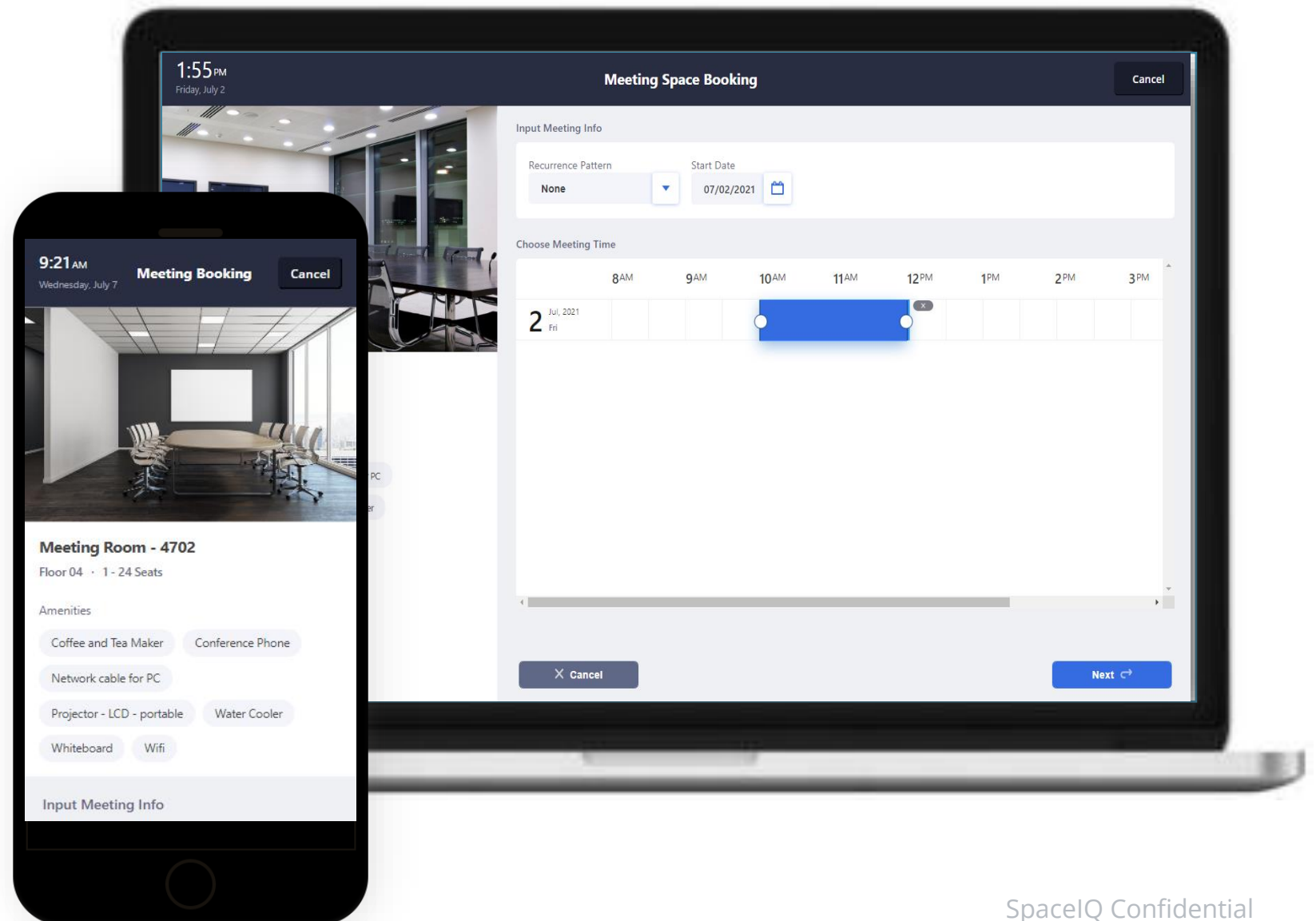
- Develop detailed strategic space requirements and apply requirements to scenarios
- Plan future occupancy scenarios to visualize space changes
- Forecast space over time
- Perform gap analysis to pinpoint gaps between space supply and demand over time.



# Reservations

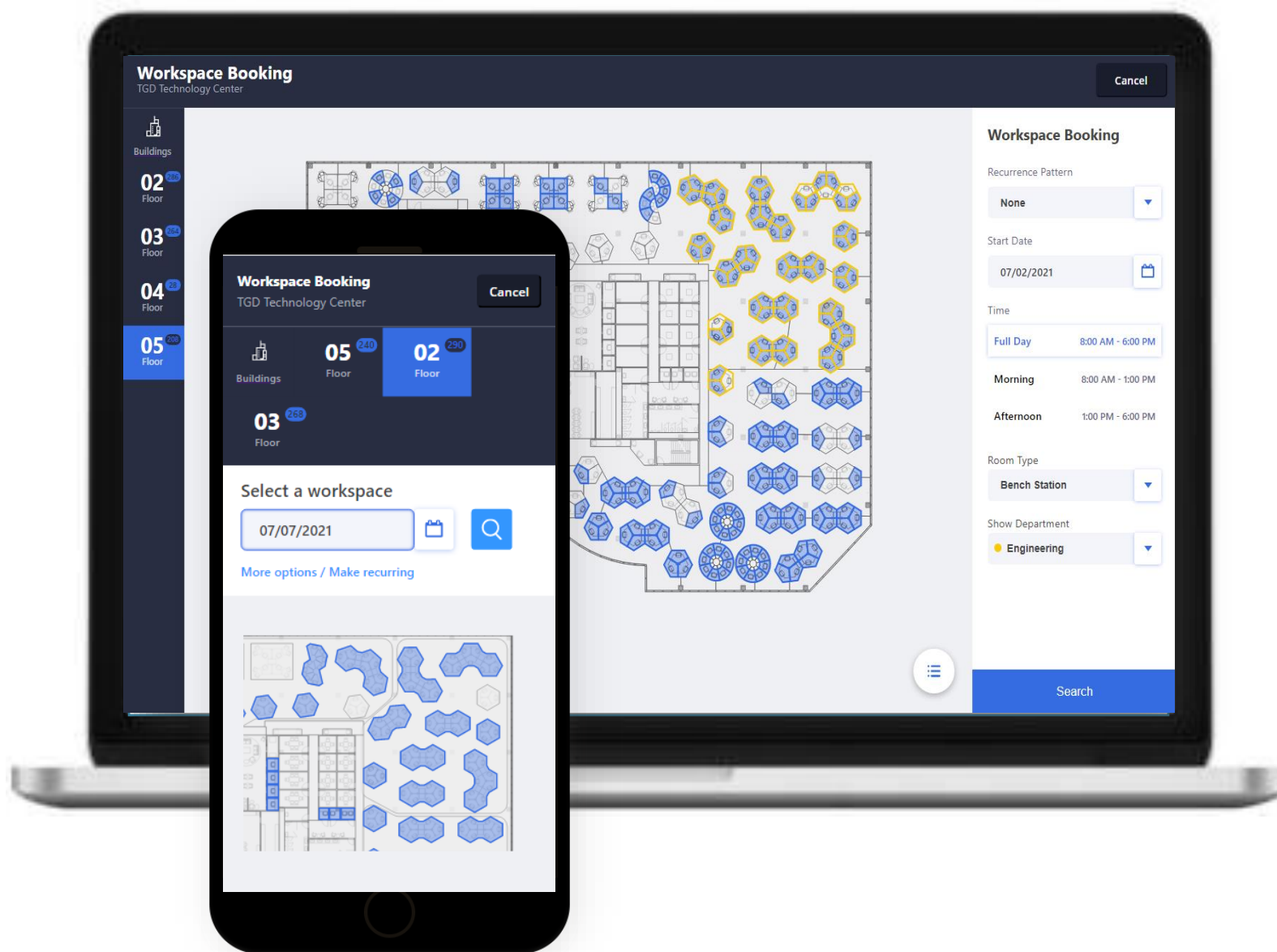
## Improve Staff Productivity

- Employee Self-service
- Book Meeting Spaces
- Find Colleagues
- Request Services
- Reservations Reports
- Includes Plugin for MS Outlook
- MS Exchange Integration - Optional





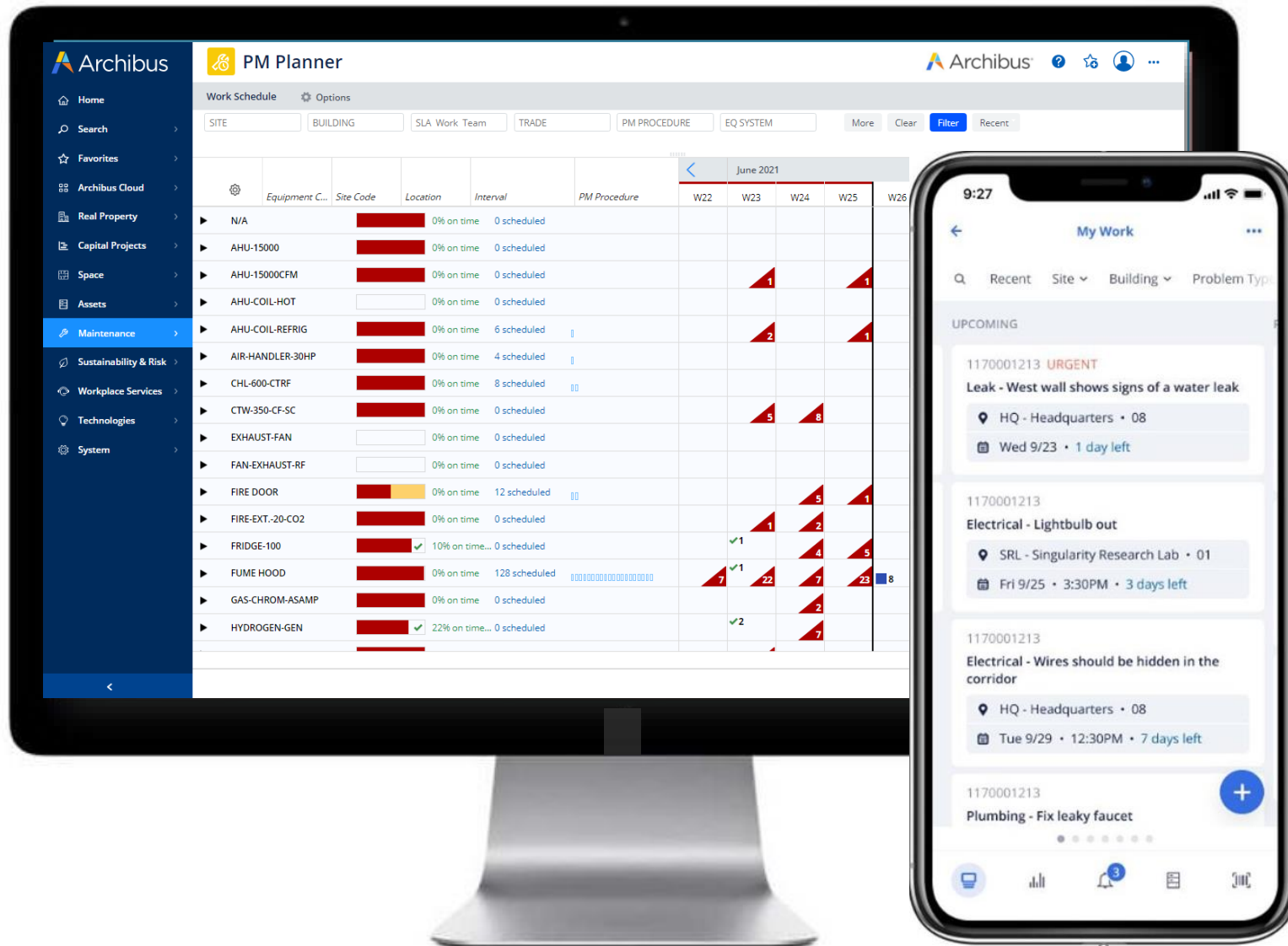
# Hoteling (Included with Reservations)



## Manage Your Flexible Workplace

- Employee Self-service
- Book Workspaces
- Reserve Workspace for yourself and others
- See desk availability by date
- Check-In/ Check-Out features
- Usability, availability and utilization reports

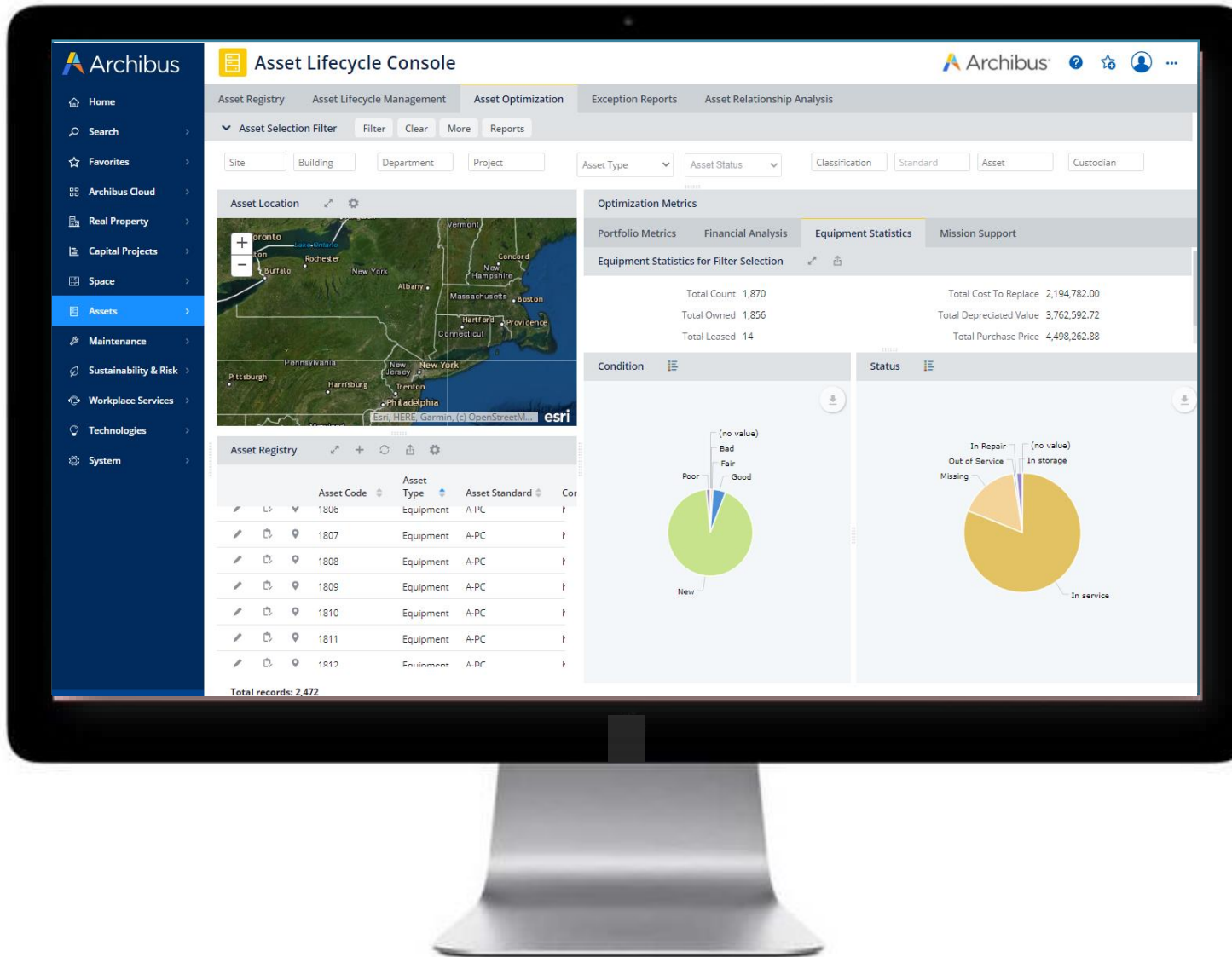
# Maintenance



## Corrective and Preventive Maintenance:

- Run your Buildings Efficiently & Improve Maintenance Outcomes
- Generate & track work orders
- Optimize labor utilization
- Automate preventative maintenance & balance resources and costs
- Track trends, identify outliers & optimize your operations
- Anticipate budgetary needs based on the cost of your preventative maintenance plan for the year ahead

# Assets



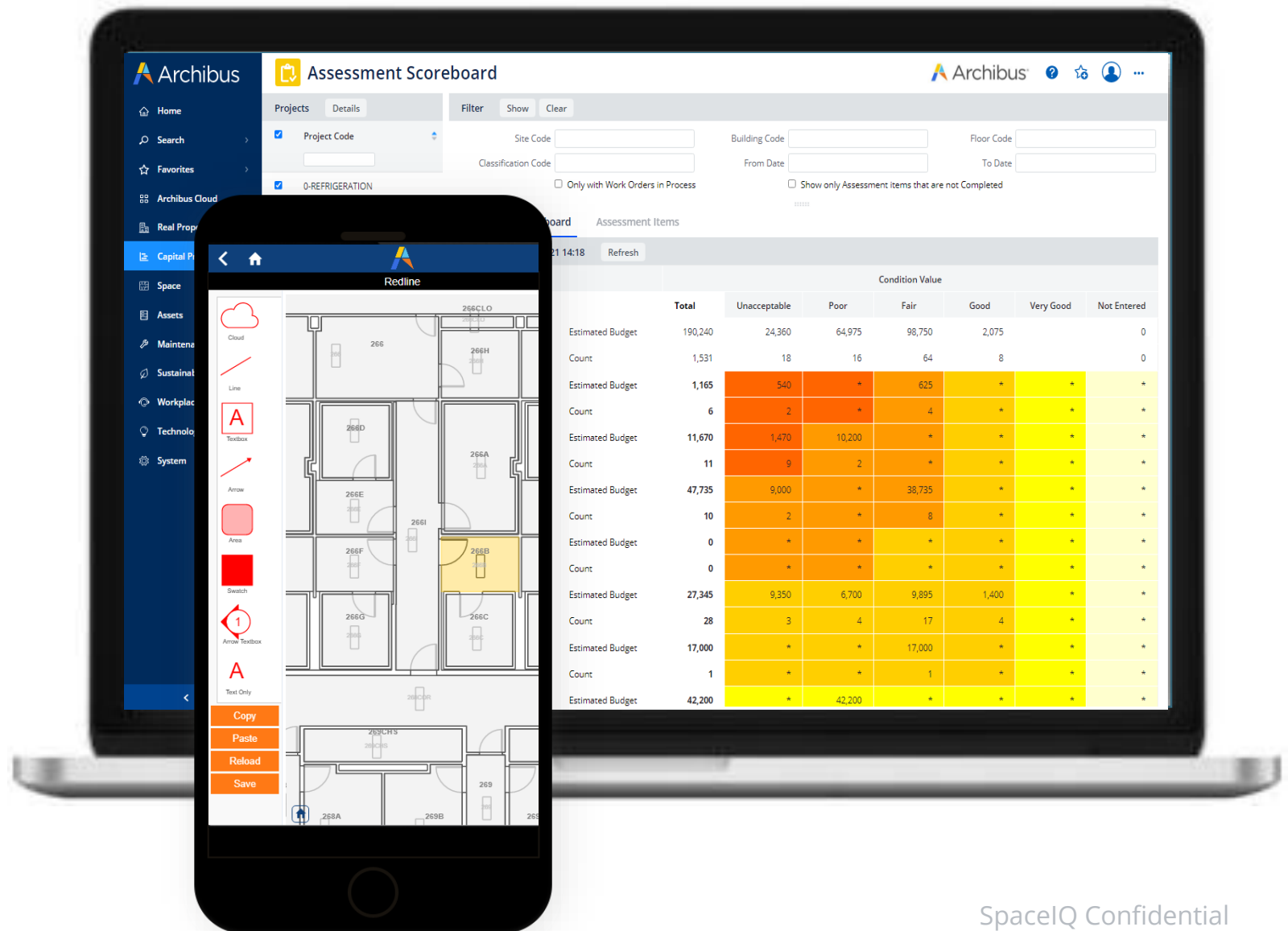
## Maintain, Track & Maximize the Value of Every Asset

- Efficiently Manage Assets from Acquisition through Disposal
- Optimize Asset Utilization
- Improve Key Metrics such as Return on Assets (ROA)
- Equipment & Telecom Console
- Equipment Depreciation Schedules
- Furniture Standards Book

# Condition Assessment

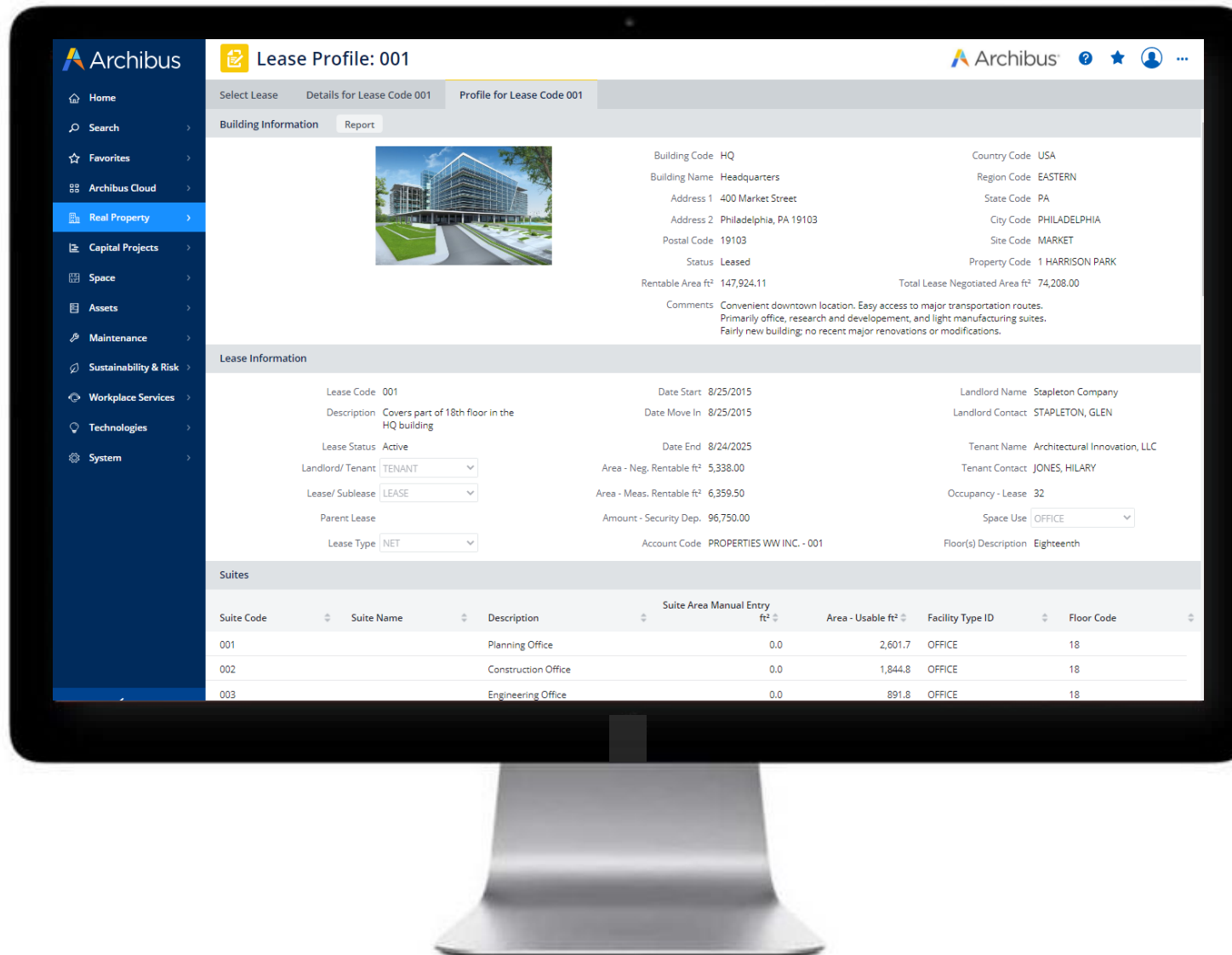
## The Condition Assessment Module provides:

- Ability to efficiently collect, process, and report information on the condition of buildings, equipment, and systems.
- Provides a dynamic repository on the condition of the organization's physical asset portfolio and enables a closed loop process in taking corrective actions to address critical deficiencies.
- Allows users to track and manage the most important items first and make informed judgments to mitigate risk and achieve the organization's core missions





# Leases



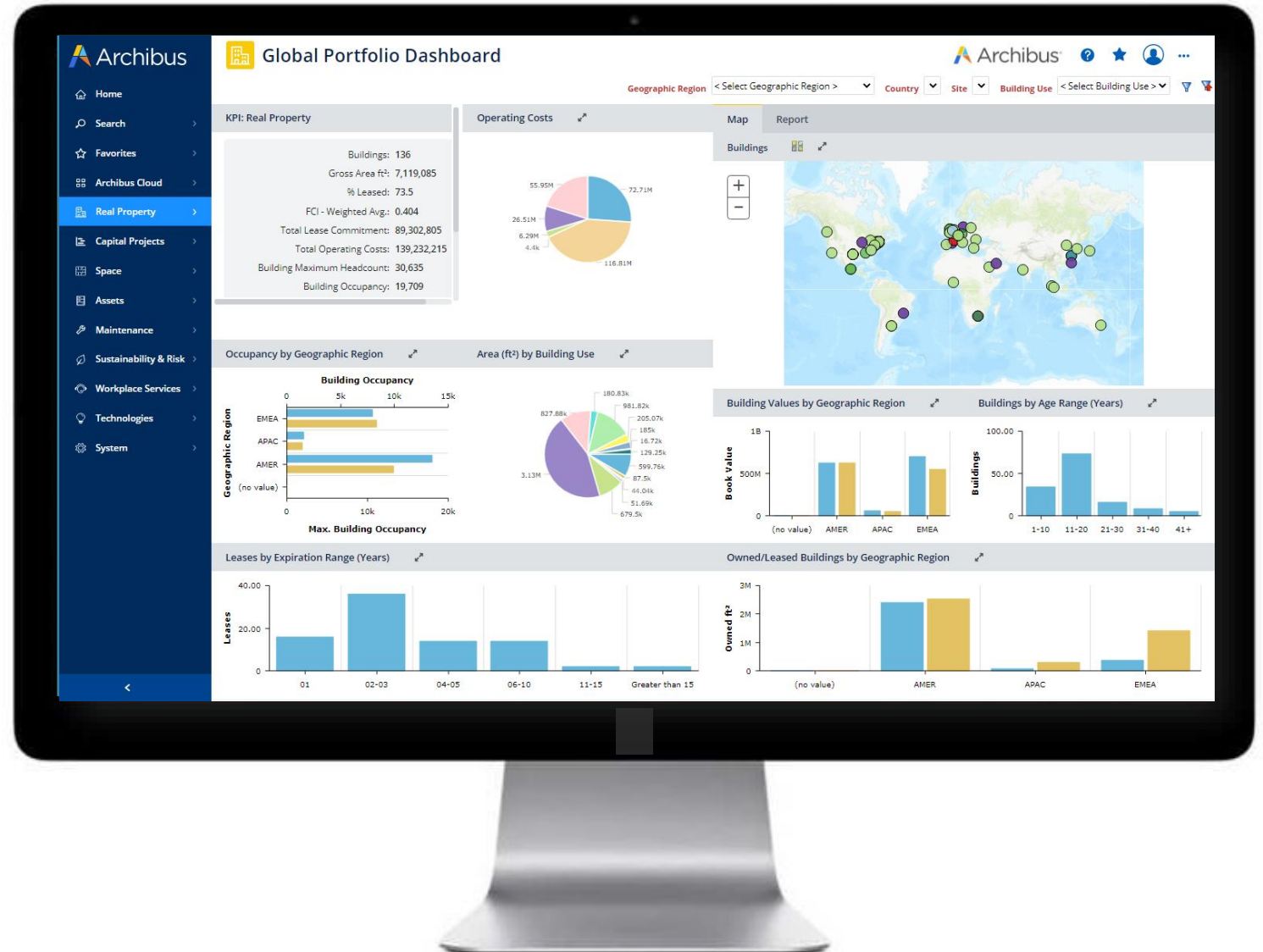
## Streamline Lease Administration

- Centralize lease inventory
- Automate alerts on key deadlines
- Analyze cost reports
- Streamline administrative workflows
- Navigate interactive map interface

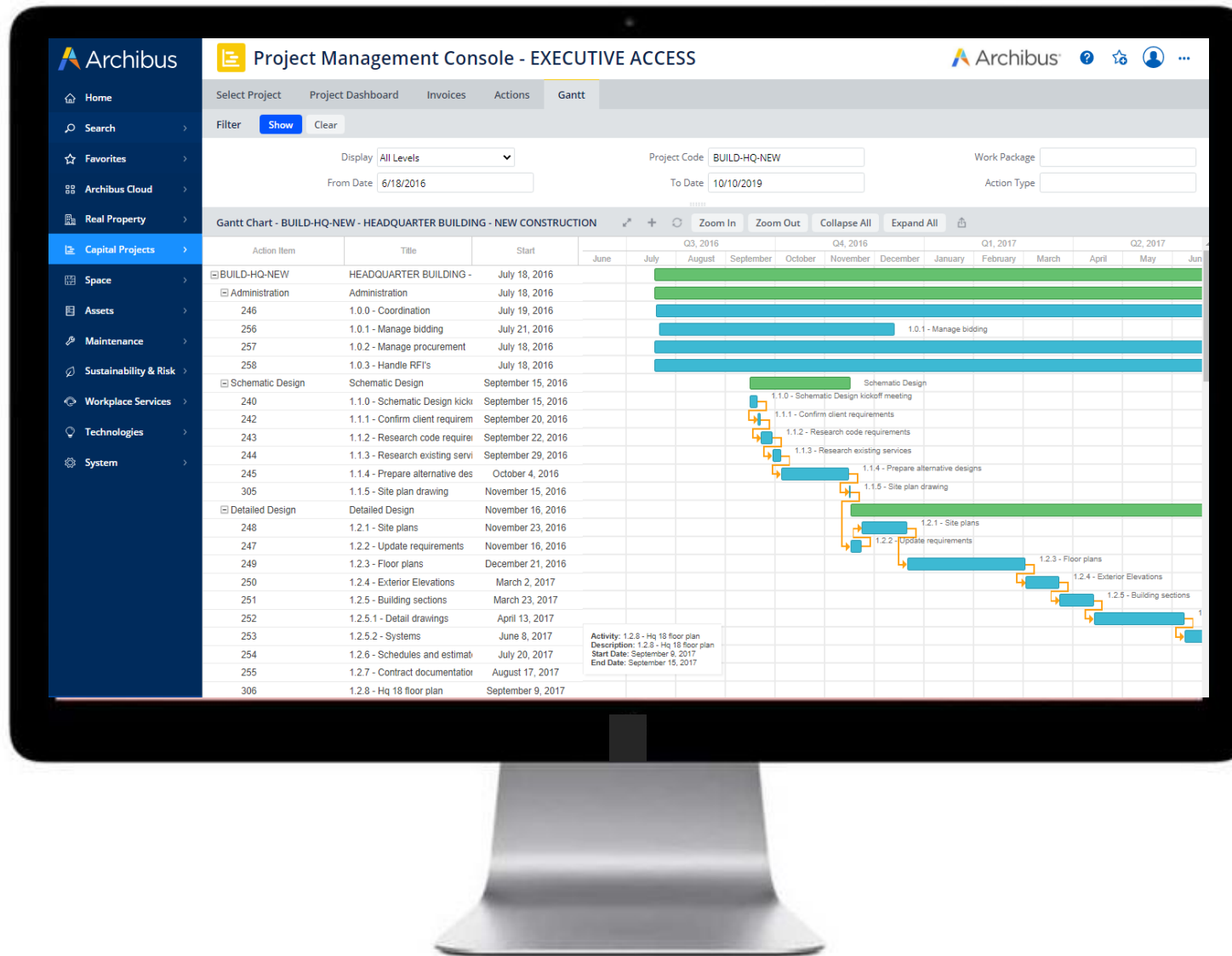
# Real Property

## The Portfolio Management Module:

- Portfolio level depository of your real-estate assets information.
- Provides portfolio analysis and display comprehensive real property data on consoles and dashboards, which include Key performance indicator charts, Geospatially-enabled map views



# Capital Projects



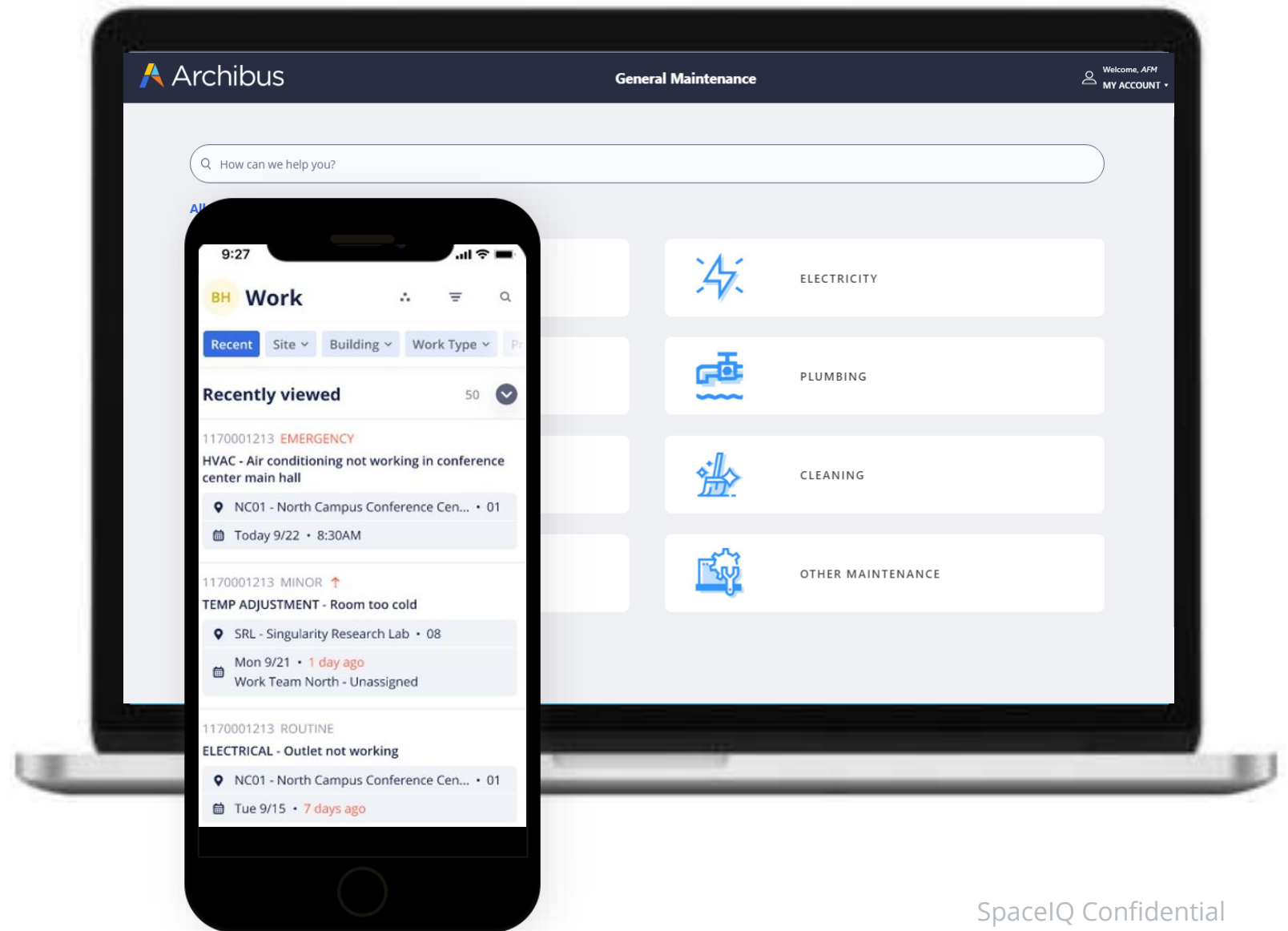
**The Capital Project Module provides integrated project management functionality to:**

- Seamlessly monitor all the projects in an organization's real estate and facility portfolio.
- Ability to track property acquisition, renovation, construction, condition assessment, and move projects in one integrated view so users can coordinate interrelated milestones from different departments, disciplines, and sites.

# Service Desk

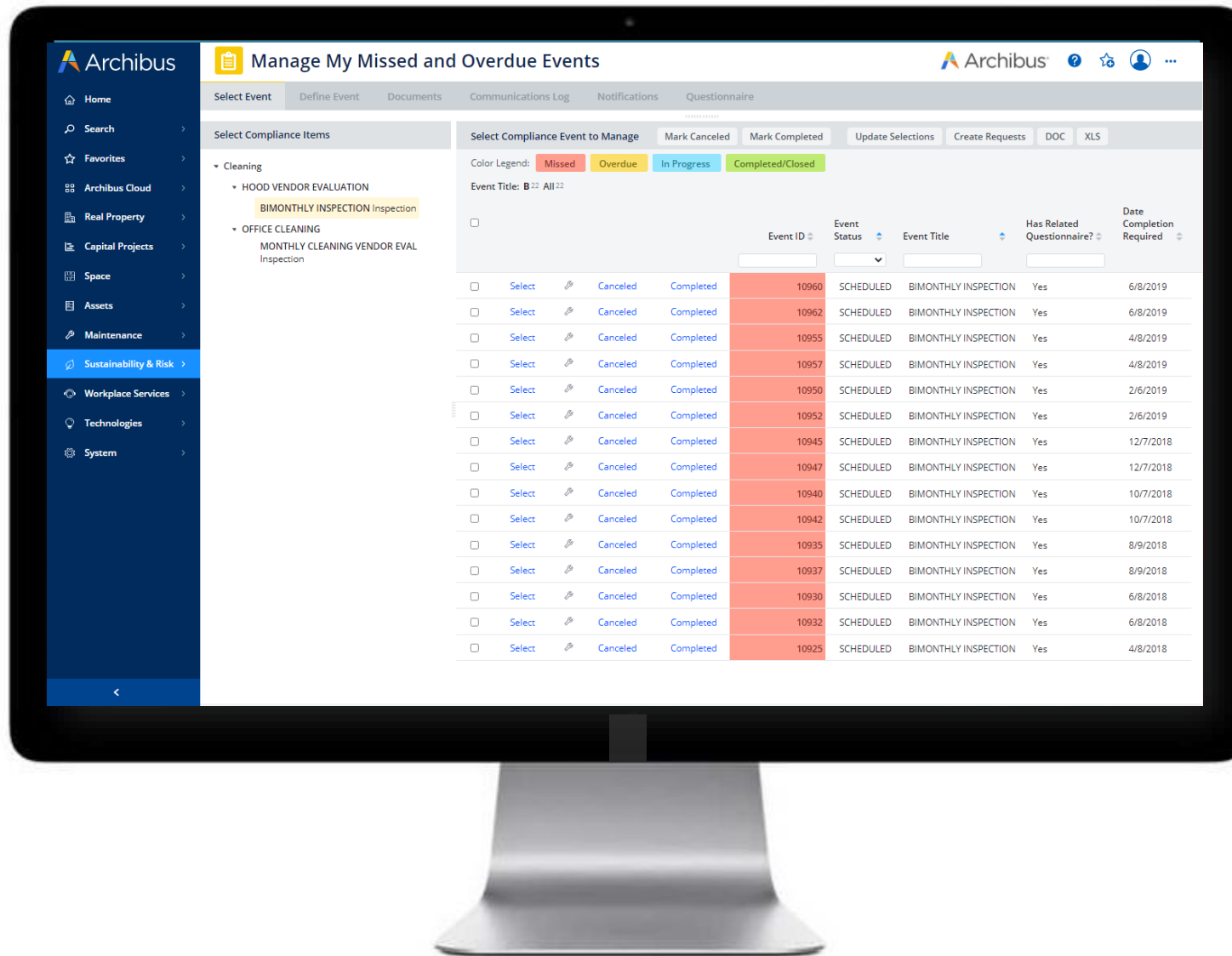
## The Service Desk Module provides:

- Simple, self-service processes, for commonly requested services, including moves/adds/changes, room reservations, project management, among many other requests.
- Automates the service request cycle through Service Level Agreement (SLA) designations that authorize, prioritize, route, and complete requests. Increase efficiency, reduce costs, and improve customer satisfaction with Archibus Service Desk.





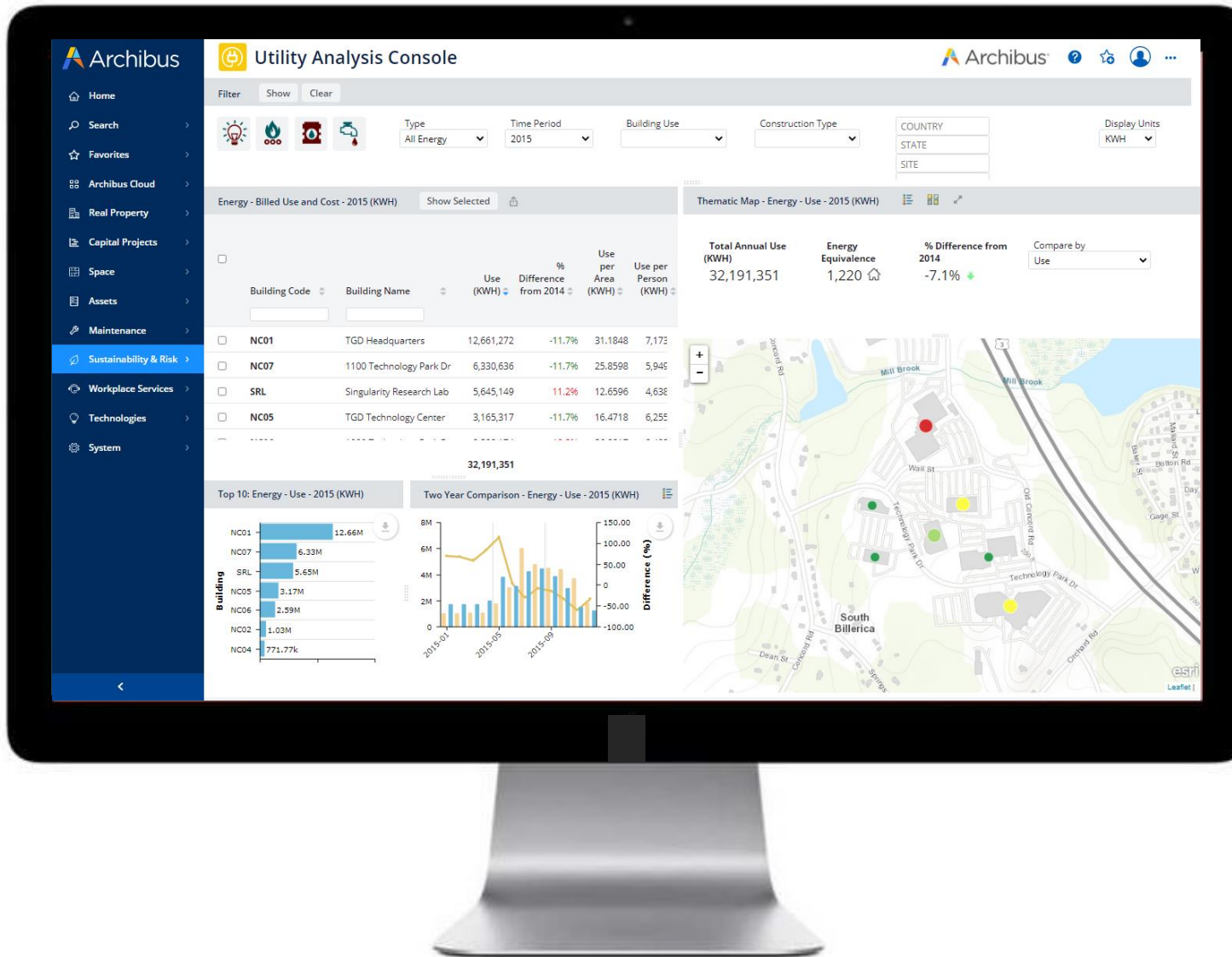
# Compliance



## The Compliance Module:

- Tracks and proactively respond to compliance requirements.
- Ensures a compliant work environment, leading to safer, more productive activities while mitigating risk and reducing administrative costs.
- Provides a highly scalable, flexible process to easily share and link regulatory compliance data with other enterprise systems and responsible persons, greatly decreasing the likelihood

# Sustainability & Risk



**A Module with set of functionalities that includes:**

- Emergency Preparedness
- Energy Management
- Workforce Health & Safety with Incident Reporting
- Waste Management
- Hazardous Material Tracking and Management

# Feedback/Questions?





Thank you