

PORTFOLIO MANAGEMENT

Improve the analysis and management of real estate assets to align the portfolio with the organizational mission

Activities and Summary Tables:

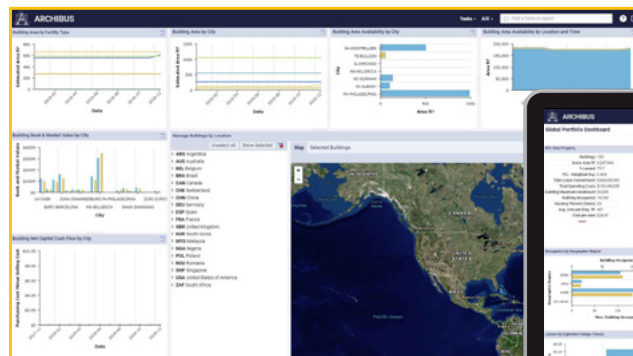
- Management by Portfolio Type: Building, Structure, Land
- Building/Land Area by Facility Type/Time Period
- Buildings/Land Area by Time Period & Location
- Buildings/Land Area Availability by Location & Time Period
- Building, Structure, Land, & Overall Portfolio Dashboards
- Data Grouping by Geography, Area Usage, Area Availability
- Timeline Analyses
- KPI Charting & Benchmarking
- Drill Down Capabilities
- Geographical Tool to Link to GIS Capability

Plus Many More...

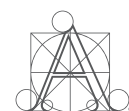
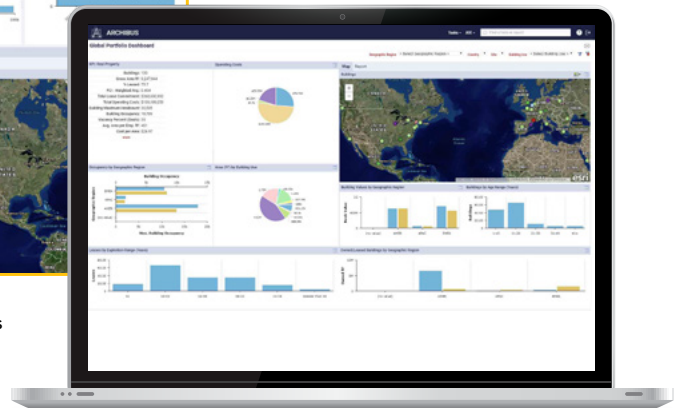
A centralized repository of accurate, easily accessible information is the foundation for strategically managing a real estate portfolio. Web-based ARCHIBUS Portfolio Management helps streamline data collection and analysis by accurately aggregating individual portfolio items to create a consolidated portfolio view. The application tracks current and projected holdings, leased versus owned space, building cost performance data, and more, to enable insightful planning and execution. Drill-down capabilities, graphical and geographic dashboards, KPI charting, and personalized views also help users visualize and analyze data to make fact-based decisions on the portfolio's ability to fulfill the organizational mission.

BENEFITS

- Improves asset stewardship through comprehensive tracking and analysis of portfolio holdings
- Provides multiple perspectives on portfolio performance to enable rapid, fact-based decisions
- Enhances root cause analysis to sustain appropriate service levels
- Reduces administrative costs through quick and intuitive data entry
- Supports multi-currency and value added tax (VAT) costs



The Portfolio Manager offers multi-view capabilities for switching between Land, Structures and Buildings portfolio analyses, incorporates graphical and GIS information, and delivers consolidated capital transaction data using the view



Improve Real Estate Stewardship

Web-based ARCHIBUS Portfolio Management enables the centralized collection, analysis, and sharing of real estate portfolio information. The creation of a common operating framework of land, structures, buildings, and leases makes possible more collaborative, better informed decision-making. Optional GIS functionality delivers map-based perspectives of properties for improved visualization and analysis. The result is an organization that is finally in complete command of accurate property and performance information.

- Improve portfolio inventory accuracy with a Web based, centralized system that streamlines collection and accessibility of portfolio information
- Add sophisticated data analysis through benchmarking, KPIs, trend analysis, projections, and other means to improve portfolio performance
- Increase data transparency through extensive drill down capabilities from the portfolio level drill-down to the individual portfolio item
- Support optimization of the real estate portfolio, ensuring future needs are met within budget

Facilitate Better Decision-Making

Portfolio Management offers a rich set of graphical tools to view the real estate portfolio in its entirety, or by specific criteria, giving managers a comprehensive view of property details to effectively communicate challenges and opportunities to C-level management. In addition to dedicated dashboards for each category of property, the application supports interactive KPI charting for aggregated portfolio information, as well as easily personalized views which present a filtered geographic list of portfolio items.

- Visualize the total impact and effectiveness of real estate spending and rationalization across business units
- Incorporate Building, Structure, Land, and Overall portfolio dashboards for consolidated views with capital data
- Support portfolio analysis with KPI charting based on consistent information relating to geography, type of space use, area availability, owned versus leased space, and more
- Easily display views to represent filtered lists of portfolio items, according to criteria such as purchase price or total leased area

Enhance Root Cause Analysis

Portfolio managers who want to identify opportunities and proactively avoid problems can do so with ARCHIBUS Portfolio Management. For example, when an unanticipated increase or decrease in available space occurs, users can quickly drill down to the portfolio single-item level to find the root cause. This ability to stay on top of day-to-day operations, spot trends, and analyze spending in near real-time enables responsive management. The application enables users to address current problems while anticipating future needs.

- Improve root cause analysis to easily isolate problems and uncover potential opportunities
- Allow managers responsible for real estate assets to be in command of portfolio details and act proactively to provide better customer service
- Empower business unit managers to easily review assets and space assigned to them so they can help rationalize capacity no longer needed in their unit
- Integrate with other applications in the ARCHIBUS suite, such as Capital Budgeting, Project Management, Space Management, and Enterprise Move Management, to assist in the execution of portfolio optimization

Reduce Data Entry Time and Errors

Portfolio Management reduces administrative costs by streamlining portfolio data entry with a Data Entry Wizard to improve speed and accuracy. The Wizard supports an easy step-by-step data entry process that enhances the ability to maintain an accurate data repository so that portfolio information always remains current and actionable.

- Define new portfolio items or edit existing ones. Easily define the Data Entry Wizard
- Increase data entry speed and accuracy with the Data Entry Wizard to reduce manual effort needed to perform data entry and maintenance tasks
- Move effortlessly through the steps necessary to add, modify, or delete information using dynamic tabs

