

GREEN BUILDING

Achieve carbon footprint and environmental sustainability certification goals for individual buildings or across an entire portfolio

Reports and Summary Tables:

Carbon Footprint

- Summarize Greenhouse Gas Emissions Totals
- Carbon Footprint Summary and Chart
- Carbon Footprints by:
 - Source Category and Detail
 - Sites and Buildings
 - Total by Year
 - Comparison by Year

Certification & Scoring

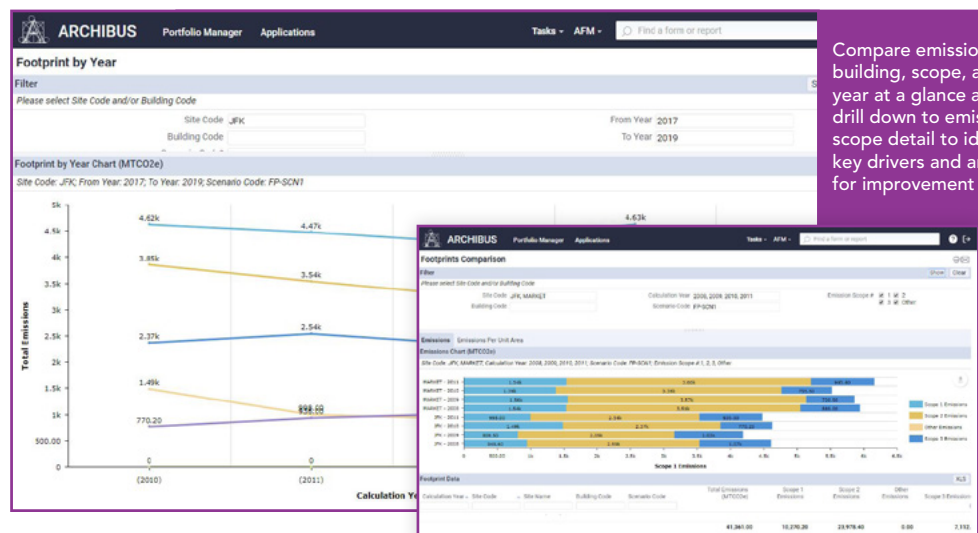
- Building Score and Dashboard
- Rating Project Notes and Documents
- Certification Standards, Levels, Credit Categories, and Credits
- Scores by Rating Project and Category
- Building Summary by Standard
- Certifications by Year and Status Summary
- Rating Project Payback Period and Comparison

Plus Many More...

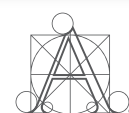
Managers are increasingly being tasked with achieving carbon footprint goals and managing environmental sustainability certification scores for individual buildings or across their entire portfolio. ARCHIBUS Green Building aids those managers by delivering a highly versatile and robust Web-based platform to provide the information framework for reducing greenhouse gas emissions, and managing the environmental sustainability certification and recertification process. The application helps guide users through the processes of defining environmental criteria and protocols, collecting portfolio data, and evaluating results to help make informed and cost-effective decisions to achieve sustainability goals.

BENEFITS

- Delivers an information framework to help reduce overall carbon footprint
- Streamlines the computation and comparison of greenhouse gas emissions for all buildings in a portfolio and tracks changes over time
- Facilitates compliance with internal or external reporting requirements
- Tracks progress, evaluates payback, and identifies best practices to simplify sustainability certification and requalification initiatives



Compare emissions by building, scope, and year at a glance and drill down to emission scope detail to identify key drivers and areas for improvement



Reduce Overall Carbon Footprint

ARCHIBUS Green Building allows users to define any number of carbon footprint scenarios, associate buildings with those scenarios, and configure combinations of carbon footprint emissions factors for each, over one or more years. Users can then proceed through a series of forms for entering or mapping carbon footprint sources like fuel and energy consumption for heat and electricity, hours flown, miles driven, electricity purchased, materials procured, and waste recycled.

- Monitor performance of buildings and associated operations according to designated standards
- Promote lower operating costs by highlighting the reduction of electricity, fuel, and other consumption variables that contribute to the carbon footprint
- Hold operating managers and building occupants accountable for their behaviors and/or practices that contribute to an overall carbon footprint
- Support strategic decision-making for potential policy changes and their associated capital investments

Facilitate Compliance Goals

Whether driven by internal or external regulatory mandates, tax or other financial incentives, or a desire to improve environmental stewardship, becoming "green" has become a high priority for many organizations. ARCHIBUS Green Building facilitates compliance with internal or external reporting requirements, defined by major standards-setting organizations, to qualify for carbon credits, reduced carbon tax, and/or to submit defensible data on progress toward meeting environmental sustainability goals.

- Track building performance over time to judge the effects of future renovations or capital projects, and verify that certification and energy efficiency ratings continue or improve over time
- Aggregate data for annual greenhouse gas inventory reporting according to internal and/or governmental regulatory requirements
- Maintain scores by defining a rating project and scoring a building, floor, or room according to a chosen rating system
- Support multiple certification systems including LEED, BREEAM, other major systems, and/or self-defined criteria
- Integrate with ENERGY STAR Portfolio Manager
- Provide many common unit conversions and support user-defined metrics to accommodate a broad range of measurement, input, and output options

Compare Greenhouse Gas Emissions Easily

ARCHIBUS Green Building exceeds the capabilities of readily available spreadsheet-based carbon footprint calculators. It provides data and calculation scalability, and aggregates information from all sources into a dynamic database, not just a flat spreadsheet file. As a result, information remains organized, secure, easy to retrieve, and accessible for analysis.

- Streamline and automate the storage and retrieval of sustainability project notes and documents
- Deliver a process-oriented and form-driven framework with detailed instructions
- Generate actionable information, with summary and analysis tables and charts for synthesizing and comparing information
- Provide tools for side-by-side comparison of a portfolio of buildings over multiple years
- Support actual or "what-if" scenarios containing different consumption amounts or versions of emissions factors

Track Progress, Identify Best Practices

Centralized and consolidated information, combined with flexible scoring and powerful analytic tools, enable ARCHIBUS Green Building users to identify, validate, and propagate best practices to achieve environmental objectives. After implementing Green Building, users can evaluate building benchmarks against other new and existing buildings in a portfolio, as well as create and compare multiple scenarios for each building.

- Determine actual savings on energy, water, and carbon within the building after construction
- Provide a quick comparison of payback periods for capital investments to achieve sustainability goals
- Supplement design values established with complementary solutions such as Autodesk Green Building Studio
- Fund, justify, and manage up-front investments in new green buildings or renovations using the ARCHIBUS Capital Budgeting and Project Management applications

