

# ARCHIBUS® Asset Management ENTERPRISE ASSET MANAGEMENT

Integrate strategic real estate planning, capital planning, portfolio project management, finance and operations information to align all assets to an organization's objectives

## Key Reports, Metrics, Analyses:

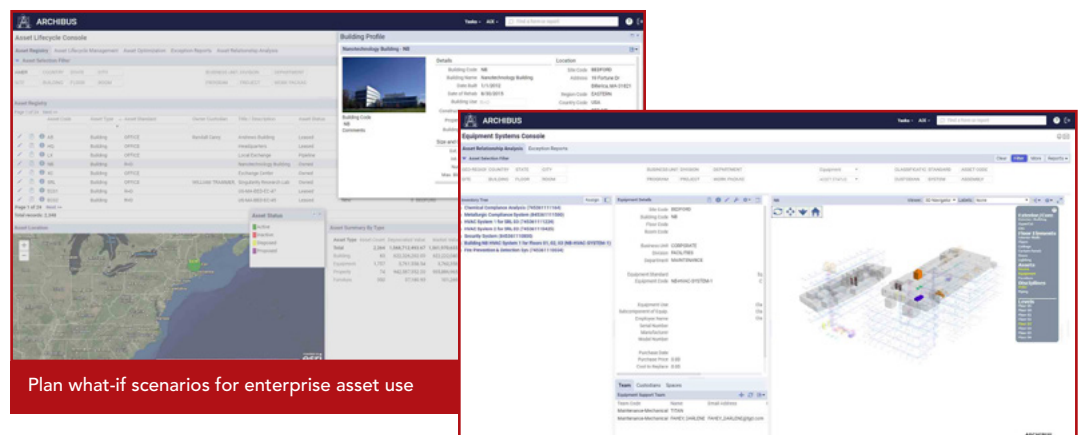
- Asset Location on GIS map
- Asset Metrics: RONA, ROCE, Asset Turnover,
- FCI, Annual Utilization, CRV
- Mission Support Analysis
- Asset Registry and Asset Profiles
- Current and Historical Asset Activities
- All Properties Yearly Financial Summary by Country
- Buildings Dashboard and Building
- Performance Analysis
- Building Sustainability Summary
- Energy Consumption by Location
- Equipment Failure Analysis and Equipment Replacement Analysis
- Telecom Connection Traces and Highlights
- Project Scorecard, Profile and Calendar
- Project Summary and Gantt PowerPoints

Plus Many More...

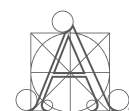
Asset managers must ensure that their total capital and other asset investments provide the coordinated, end-to-end resources needed to support an organization's immediate and long-term mission. With purpose-built interfaces for professionals in planning, finance, real estate, facilities, IT, maintenance—and with mobile apps for field personnel and the shipping/receiving area—ARCHIBUS Enterprise Asset Management streamlines asset management by providing a 360-degree view of every asset's ownership, value, location, use, lifecycle status, and condition. This holistic view enables asset managers to make strategic data-driven decisions for the whole enterprise that are reflected in day-to-day operations.

## BENEFITS

- Improve return on assets by providing a common operating picture that enables key strategic and operations stakeholders to align all assets to an organization's objectives
- Plan what-if scenarios to optimize enterprise asset investments
- Centralize enterprise asset management with easy integration to other ERP systems
- Engage asset management teams to accomplish their goals with coordinated end-to-end resourcing
- Optimize capital and other asset investments through integrated lifecycle management for planning, acquisition, utilization, repurposing, and decommissioning/disposal
- Enable staff to quickly inventory assets with mobile apps



For more information, visit [www.archibus.com/eam](http://www.archibus.com/eam)



ARCHIBUS®



## Optimize Return on Assets

Many organizations do not have clear and comprehensive visibility into the one-third of their balance sheet comprising all their physical assets. That's because strategic and operational information are often not integrated for the various stakeholders. By providing a common operating picture with ARCHIBUS Enterprise Asset Management, key enterprise asset management stakeholders can more effectively align assets with organizational objectives.

- Reduce unnecessary capital and other asset expenditures through improved use and reuse rates
- Reconcile real estate, financial, maintenance, IT, and mobile data sources into a single registry of all assets and their use
- Make data-driven decisions through integrated performance metrics, business analytics, and accurate asset reporting
- Improve asset strategy and coordination among team members

## Leverage Integrated Financial and Asset-Use Information

View asset cost/performance and financial reporting with ease using the Enterprise Asset Management application. This application helps managers achieve precise financial reporting for a variety of needs. The improved reporting accuracy streamlines data analysis/extraction for compliance reporting such as Sarbanes-Oxley, SEC, 10K, and tax reporting. With it, financial managers can:

- Improve profitability estimates for each business unit by tracking asset ownership and in-use status to calculate Return on Capital Employed, Return on Net Assets, and Gross Income to Capital Expenses
- Maximize tax savings through accurate depreciation deductions while shortening financial/accounting process times
- Reduce the likelihood of overpayment of property taxes and insurance premiums based on improved asset tracking and valuation

## Improve Asset Management through Greater Transparency and Mobile Apps

Asset managers are under constant pressure to optimize each asset's use throughout its lifecycle. ARCHIBUS Enterprise Asset Management's advanced capabilities leverage centralized, consistent data to optimize asset use to an unprecedented degree. Making that task easier are mobile apps such as Asset & Equipment Registration and Asset & Equipment Survey for convenient, real-time data collection and access, as well as our Asset & Equipment Registration form, which speeds entry of assets into the asset registry.

- Improve asset use through centralized tracking and optimization of assets
- Increase accountability with full lifecycle tracking, actual use data, central monitoring and control
- Reduce excess inventory/warehousing levels with better understanding of asset requirements
- Easily locate assets by leveraging existing space backbone data for space allocation/chargeback data

## Use Integrated Asset Lifecycle Data for Asset and Business Continuity Planning

Keeping organizations operating smoothly means knowing how and when to make the right fix/buy/replace or repurpose/disposal decisions for assets that support worker productivity and business continuity. Infrastructure and facilities managers, for example, need the range of analytical tools found within ARCHIBUS Enterprise Asset Management to optimize asset use and cost-effectiveness.

- Improve the ability to repurpose buildings, spaces, and infrastructure by knowing what assets are in each building and their requirements
- Avoid unnecessary downtime or business discontinuity through proactive management of at-risk assets
- Support day-to-day operations, such as moves and reconfigurations, through an accurate registry of what assets are present and which are affected

